

Caldaia e Scambiatore ESTRAIBILE
EXTRACTABLE heating Boiler and Exchanger
Chaudière et Echangerur à EXTRAIBLE
Dampfkessel AUSZIEHBAR AUSTAUSCHER

CLD-25

JUN - 1 GR

rev.

00

05/2002

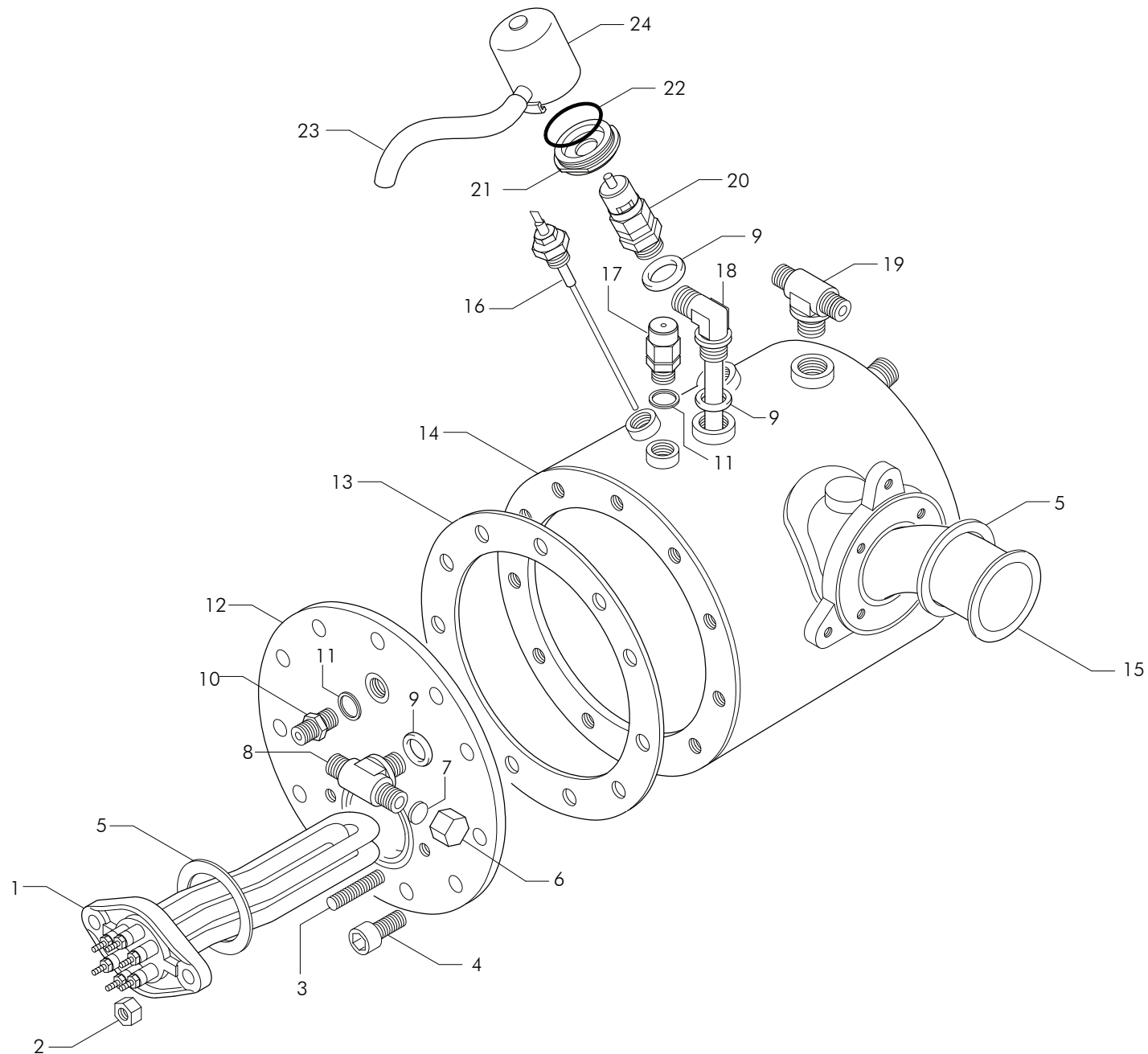
CLD-30

2 - 3 - 4 GR

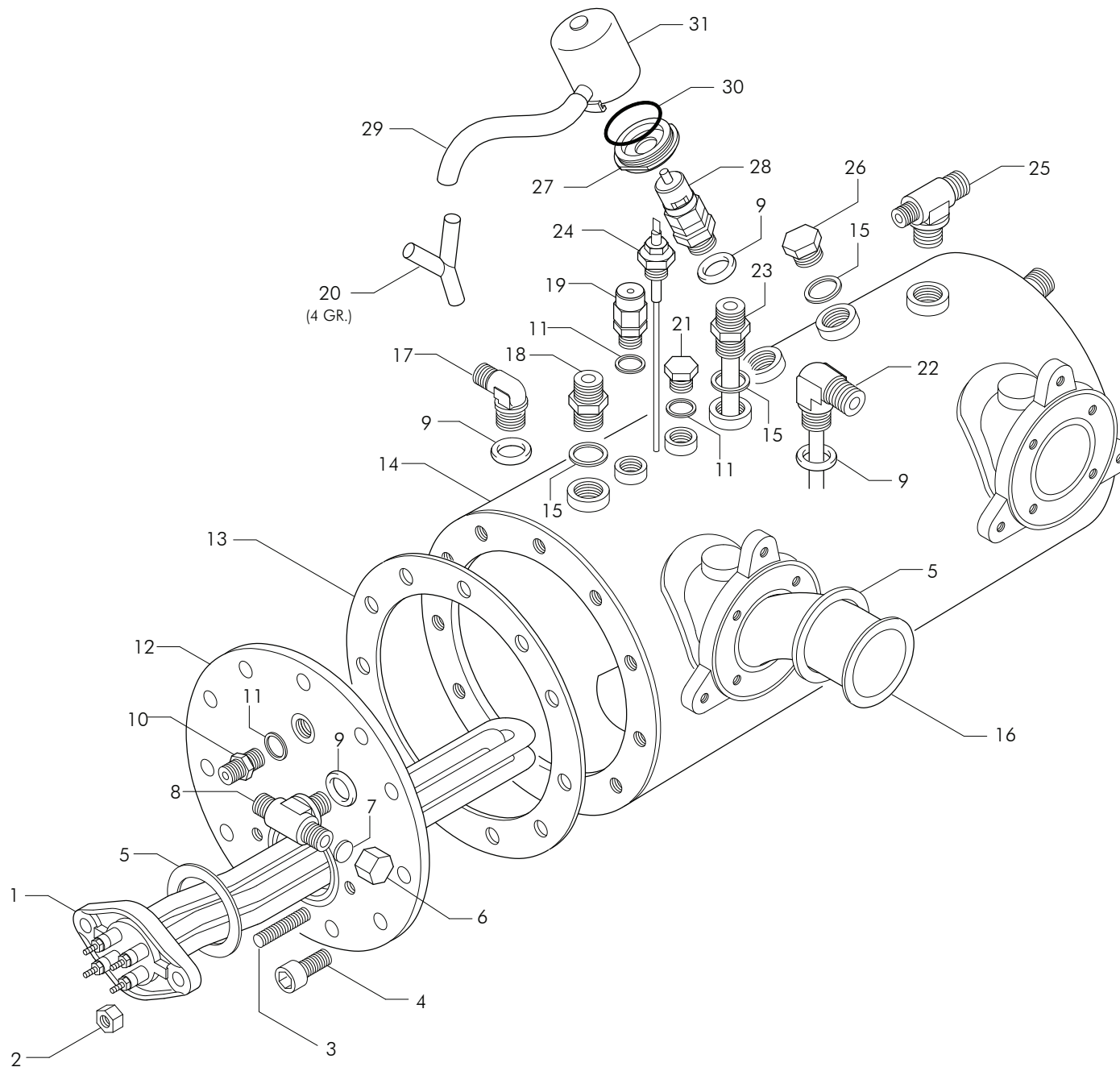
rev.

00

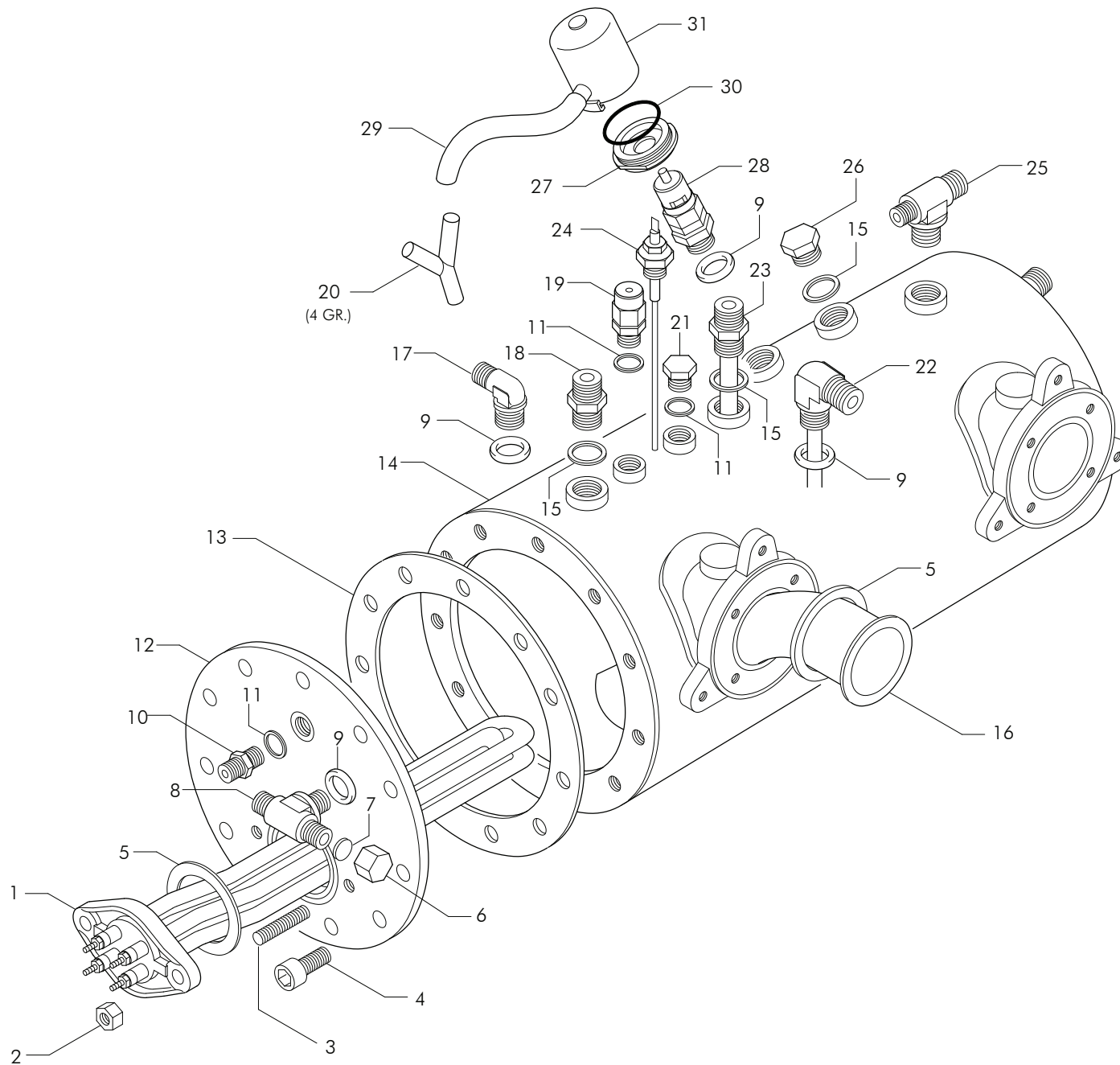
05/2002



Pos	Cod.	Denominazione - IT -	Denomination - GB -	Denomination - FR -	Denomination - DE -
1	17000	RES.1GR 4P 120V 1700W	HEATING ELEMENT 1GR 120V 1700W	RESISTANCE 1GR 120V 1700W	HEIZKORPER 1GR 120V 1700W
1	17001	RESISTENZA 1GR 4P 120V 2000W	HEATING ELEMENT 1GR 110V-2000W	RESISTANCE ELECTRIQUE 1GR 110V2000W	HEIZKORPER 1 GR 110V 2000W
1	17002	RES.1GR 4P 230/240V 2000W	HEATING ELEMENT 1GR 220V/240V 2000W	RESISTANCE ELEC.1GR 220V/240V 2000W	HEIZKORPER 1GR 220V/240V 2000W
1	17003	RES.1GR 4P 230/240V 1700W	HEATING ELEMENT 1GR 230/240V 1700W	RESISTANCE 1GR 230/240V 1700W	HEIZKORPER 1GR 230/240V 1700W
1	17006	RESISTENZA 1GR 6P 230/380V 1800W	HEAT.ELEMENT 1GR 220/380 2000W 6P	RESISTANCE 1GR 220/380 2000W 6POLES	HEIZKORPER 1GR 220/380 2000W
2	23049	DADO OTTONE M8 UNI 5587	BRASS NUT M8 UNI 5587	ECROU LAITON M8 UNI 5587	MESSING-SCHRAUBENMUTTER M8 UNI 5587
3	23133	PRIGIONIERO INOX AISI304 8X30 DIN 939	STAINLESS STEEL BOLT AISI304 8X40	VIS INOX AISI304 8X40	STAHLSCRAUBE 8X40 AISI304 8X40
4	23556	VITE TCEI INOX 10X20 UNI5931 DIN912	STEEL SCREW TCCE 10X20	VIS INOX TCCE 10X20	STAHLSCRAUBE TCCE 10X20
5	12001	GUARNIZIONE TEFLON VERGINE X RES/SCA	TEFLON GASKET ELEMENT/EXCH. 58X43X2	JOINT TEFLON RESIST/ECHANG. 58X43X2	TEFLON DICHTUNG 58X23X2
6	25782	TAPPO FEMMINA 1/4 GAS	1/4 GAS FEMALE TAP	BOUCHON FEMELLE 1/4 GAZ	INNENANSCHLUSSSTÖPSEL 1/4 GAS
7	12007	GUARNIZIONE KLINGERSIL4400	KLINGERSIL4400 COPPER SEAL	JOINT KLINGERSIL4400 POUR BOUCHON	DICHTUNG KLINGER SIL4400 X DECKEL
8	43060	RACCORDO 1/4X1/4X1/4 T	'T' CONNECTOR 1/4 + 1/4 + 1/4	RACCORD 'T' 1/4 + 1/4 + 1/4	T'-ANSCHLUSS 1/4+1/4+1/4
9	12101	GUARNIZIONE CU/ALIM 3/8 22X17X3	3/8 22X17X3 FEEDER/COPPER SEAL	JOINT CUIVRE/ALIM 3/8 22X17X3	KUPFERDICHTUNG/SPEIS. 3/8 22X17X3
10	25686	RACCORDO 1/4X1/4 FLANGIA	CONNECTOR 1/4 X 1/4 FLANGE	RACCORD 1/4 X 1/4 BRIDE	ANSCHLUSS 1/4X1/4 FLANSCH
11	12153	GUARNIZIONE CU 1/4 17X13.3X1.5	1/4 17X13.3X1.5 COPPER SEAL	JOINT CUIVRE 1/4 17X13.3X1.5	KUPFERDICHTUNG 1/4 17X13.3X1.5
12	53011	FLANGIA NORMALE SENZA FORI	FLANGE WITHOUT HOLES	BRIDE SANS TROUS	NORMALER FLANSCH OHNE LÖCHER
13	12003	GUARNIZIONE TEFLON VERGINEXCALDAIA	BOILER TEFLON GASKET 190X139X2	JOINT CHAUDIERE TEFLON 190X139X2	TEFLON KESSELDICHTUNG 190X139X2
14	62008	CALDAIA JUNIOR ESTR AEA	BOILER JUN EXTRACTABLE A.W.R.	CHAUDIERE JUN EXTRAIBLE R.E.A.	KESSEL JUN AUSZIEHBAR A.W.F.
14	62013	CALDAIA 1GR ESTRAIBILE OVE	BOILER 1GR OVE - EXTRACTABLE	CHAUDIERE 1GR OVE - EXTRAIBLE	KESSEL 1GR OVE - AUSZIEHBAR
14	62022	CALDAIA 1GR ER ESTRAIBILE AEA	BOILER 1GR EXTRACTABLE - A.W.REFILL	CHAUDIERE 1GR EXTRAIBLE-REM.EAU.AUT	KESSEL 1GR AUSZIEHBAR - A.W.F.
14	62027	CALDAIA 1GR ER ESTR.+ 3/8 AEA	BOILER 1GR EXTRACTABLE - A.W.R.	CHAUDIERE 1GR EXTRAIBLE- R.E.A.	KESSEL 1GR AUSZIEHBAR - A.W.F.
14	62028	CALDAIA JUNIOR ESTR + 3/8 AEA	BOILER JUN EXTRACT.+3/8 A.W.R.	CHAUDIERE JUN EXTR.+3/8 R.E.A.	KESSEL JUN AUZIEHBAR+3/8 A.W.F.
14	62033	CALDAIA JUNIOR ESTRAIBILE OVE	BOILER 1GR EXTRACTABLE JUNIOR OVE	CHAUDIERE 1GR EXTRAIBLE JUNIOR OVE	KESSEL 1GR AUSZIEHBAR JUNIOR OVE
15	63100	SCAMBIATORE ESTRAIBILE D42 CURVO	EXTRACTABLE EXCHANGER D42 - BENT	ECHANGEUR EXTRAIBLE D42 - COURBE	AUSZIEHBARER WARMETAUSCHER D42
16	20251	SONDA LIVELLO TL 10/B L125 908600	TL 10/B L125 900000 LEVEL PROBE	JAUGE TL 10/B L125 900000	PEGELFÜHLER TL 10/B L125 900000
17	56150	VALVOLA ANTIRISUCCHIO V.A.R.	ANTI-EDDY VALVE V.A.R.	SOUPAPE ANTI-DEPRESSION V.A.R.	VENTIL UNTERDRUCKFREI V.A.R.
18	52000119	TBS.D-10 L.125 PESCANTE "L" A 50/A	D-10 125 L PIPE CUPWARMER AT 50/A	TUYAU D-10 L.125 POUR ASPIRATION "L"	ROHR D.10 L.125 A 50/A
19	43033	RACCORDO "T" 3/8X3/8X1/4	3/8X3/8X1/4 T FITTING	RACCORD "T" 3/8X3/8X1/4	ANSCHLUSS 3/8X3/8X1/4 T
20	20352	VALVOLA DI SICUREZZA *CE*	*CE* SAFETY VALVE	SOUPAPE DE SECURITE *CE*	SICHERHEITSVENTIL *CE*
21	15006001	FLANGIA GRIGOLY VALVOLA SIC.	FLANGE GRIVORY VALVE	JOINT GRIVORY VANNE	FLANSCH GRIVORY VENTIL
22	12300000	GUARNIZIONE OR 3156 VITON X PISTONI	O RING VITON	JOINT OR VITON	OR DICHTUNG VITON
23	15478002	TUBO SILICONE 8X11 L.70CM	SILICONE TUBE 8X11 L.70CM	TUYAU SILICONE 8X11 L.70CM	SILIKONROHR 8X11 L.70CM
24	56009980	ASSIEME PROTEZIONE VALVOLE SICUREZZA	UNIT PROTECTION VALVE	ENSEMBLE PROTECTION VANNE	SATZ-SCHUTZGITTER VENTIL



Pos	Cod.	Denominazione - IT -	Denomination - GB -	Denomination - FR -	Denomination - DE -
1	17050	RES.2GR 4P 120V 2600W	HEATING ELEMENT 2GR 110V-2600W	RESISTANCE ELEC. 2GR 110V-2600W	HEIZKORPER 2GR 110V-2600W
1	17051	RESISTENZA 2GR 4P 230/240V 2600W	HEATING ELEMENT 2GR 220V/240V-2600W	RESISTANCE ELEC.2GR 220V/240V-2600W	HEIZKORPER 2GR 220V/240V 2600W
1	17053	RES.2GR 4P 380V 4000W	HEATING ELEMENT 2GR 380V 4000W	RESISTANCE ELEC. 2GR 380V 4000W	HEIZKORPER 2GR 380V 4000W
1	17054	RESISTENZA 2GR 6P 230/380V 2600W	HEATING EL.2GR 220/380V-2600W 6POLE	RESISTANCE 2GR 220V/380V-2600W 6P	HEIZKORPER 2GR 220V/380V-2600 6P
1	17056	RES.2GR 4P 230/240V 4000W	HEATING ELEMENT 2GR 220/240V 4000W	RESISTANCE ELEC. 2GR 220/240V 4000W	HEIZKORPER 2GR 220/240V 4000W
1	17057	RESISTENZA 2GR 6P 230/380V 4000W	HEATING EL. 2GR 220/380V-4000W 6P	RESISTANCE 2GR 220/380V 4000W 6P.	HEIZKORPER 2GR 220/380V 4000W 6P
1	17058	RES.2GR 6P 230/380V 3000V	HEATING EL.2GR 220/380V-3000W 6POLE	RESISTANCE 2GR 220/380V-3000W 6POLE	HEIZKORPER 2GR 220/380V-3000W 6P
1	17059	RESISTENZA 2GR 6P 230/380V 3400W	HEATING EL.2GR 220/380V-3400W 6POLE	RESISTANCE 2GR 220/380V-3400W 6POLE	HEIZKORPER 2GR 220/380V-3400W 6P
1	17060	RESISTENZA 2GR 6P 230/380V 4500W	HEATING EL.2GR 230/380V 4500W 6POLE	RESISTANCE 2GR 230/380V 4500W 6POLE	HEIZKORPER 2GR 230/380V 4500W 6P
1	17061	RES.2GR 4P 440V 2600W	HEATING ELEMENT 2GR 440V 2600W 4P	RESISTANCE ELEC. 2GR 440V 2600W 4P	HEIZKORPER 2GR 440V 2600W 4P
1	17062	RES.2GR 4P 440V 4000W	HEATING ELEMENT 2GR 440V 4000W 4P	RESISTANCE ELEC. 2GR 440V 4000W 4P	HEIZKORPER 2GR 440V 4000W 4P
1	17100	RES.3GR 4P 120V 3700W	HEATING ELEMENT 3 GR 110V 3700W	RESISTANCE ELEC. 3GR 110V 3700W	HEIZKORPER 3GR 110V 3700W
1	17101	RES.3GR 4P 230/240V 3700W	HEATING ELEMENT 3GR 220/240V 3700W	RESISTANCE ELEC. 3GR 220/240V 3700W	HEIZKORPER 3GR 220/240V-3700W
1	17103	RES.3GR 4P 380V 5000W	HEATING ELEMENT 3GR 380V 3700W	RESISTANCE ELEC. 3GR 380V 3700W	HEIZKORPER 3GR 380V 3700W
1	17104	RES.3GR 6P 230/380V 3700W	HEATING EL. 3GR 220/380V 3700W 6P	RESISTANCE 3GR 220/380V 3700W 6P	HEIZKORPER 3GR 220/380V 3700W 6P
1	17106	RES.3GR 4P 230/240V 5000W	HEATING ELEMENT 3GR 220/240V 5000W	RESISTANCE ELEC. 3GR 220/240V 5000W	HEIZKORPER 3GR 220/240V 5000W
1	17107	RESISTENZA 3GR 6P 230/380V 5000W	HEATING EL. 3GR 220/380V 5000W 6P	RESISTANCE 3GR 220/380V 5000W 6P	HEIZKORPER 3GR 220/380V 5000W 6P
1	17114	RES.3GR 4P 440V 3700W	HEATING EL. 3GR 440V 3700W 4POLE	RESISTANCE 3GR 440V 3700W 4POLE	HEIZKORPER 3GR 440V 3700W 4P
1	17150	RES.4GR 4P 230/240V 5000W	HEATING ELEMENT 4GR 220/240V 5000W	RESISTANCE ELEC. 4GR 220/240V 5000W	HEIZKORPER 4GR 220/240V 5000W
1	17151	RES.4GR 6P 230/380V 5000W	HEATING EL. 4GR 220/380V 5000W 6P	RESISTANCE 4GR 220/380V 5000W 6P	HEIZKORPER 4GR 220/380V 5000W 6P
1	17152	RES.4GR 4P 230/240V 7000W	HEATING ELEMENT 4GR 220/240V 7000W	RESISTANCE ELEC. 4GR 220/240V 7000W	HEIZKORPER 4GR 220/240V 7000W
1	17153	RES.4GR 6P 230/380V 6000W	HEATING EL. 4GR 220/380V 7000W 6P	RESISTANCE 4GR 220/380V 7000W 6P	HEIZKORPER 4GR 220/380V 7000W 6P
1	17155	RES.4GR 4P 440V 5000W	HEATING EL. 4GR 440V 5000W 4POLES	RESISTANCE 4GR 440V 5000W 4POLES	HEIZKORPER 4GR 440V 5000W 4POLEN
2	23049	DADO OTTONE M8 UNI 5587	BRASS NUT M8 UNI 5587	ECROU LAITON M8 UNI 5587	MESSING-SCHRAUBENMUTTER M8 UNI 5587
3	23133	PRIGIONIERO INOX AISI304 8X30 DIN 939	STAINLESS STEEL BOLT AISI304 8X40	VIS INOX AISI304 8X40	STAHLSCHRAUBE 8X40 AISI304 8X40
4	23556	VITE TCEI INOX 10X20 UNI5931 DIN912	STEEL SCREW TCCE 10X20	VIS INOX TCCE 10X20	STAHLSCHRAUBE TCCE 10X20
5	12001	GUARNIZIONE TEFLON VERGINE X RES/SCA	TEFLON GASKET ELEMENT/EXCH. 58X43X2	JOINT TEFLON RESIST/ECHANG. 58X43X2	TEFLON DICHTUNG 58X23X2
6	25782	TAPPO FEMMINA 1/4 GAS	1/4 GAS FEMALE TAP	BOUCHON FEMELLE 1/4 GAZ	INNENANSCHLUSSSTÖPSEL 1/4 GAS
7	12007	GUARNIZIONE KLINGERSIL4400	KLINGERSIL4400 COPPER SEAL	JOINT KLINGERSIL4400 POUR BOUCHON	DICHTUNG KLINGER SIL4400 X DECKEL
8	43060	RACCORDO 1/4X1/4X1/4 T	'T' CONNECTOR 1/4 + 1/4 + 1/4	RACCORD 'T' 1/4 + 1/4 + 1/4	T'-ANSCHLUSS 1/4+1/4+1/4
9	12101	GUARNIZIONE CU/ALIM 3/8 22X17X3	3/8 22X17X3 FEEDER/COPPER SEAL	JOINT CUIVRE/ALIM 3/8 22X17X3	KUPFERDICHTUNG/SPEIS. 3/8 22X17X3
10	25686	RACCORDO 1/4X1/4 FLANGIA	CONNECTOR 1/4 X 1/4 FLANGE	RACCORD 1/4 X 1/4 BRIDE	ANSCHLUSS 1/4X1/4 FLANSCH
11	12153	GUARNIZIONE CU 1/4 17X13.3X1.5	1/4 17X13.3X1.5 COPPER SEAL	JOINT CUIVRE 1/4 17X13.3X1.5	KUPFERDICHTUNG 1/4 17X13.3X1.5
12	53011	FLANGIA NORMALE SENZA FORI	FLANGE WITHOUT HOLES	BRIDE SANS TROUS	NORMALER FLANSCH OHNE LÖCHER
13	12003	GUARNIZIONE TEFLON VERGINEXCALDAIA	BOILER TEFLON GASKET 190X139X2	JOINT CHAUDIERE TEFLON 190X139X2	TEFLON KESSELDICHTUNG 190X139X2



Pos	Cod.	Denominazione - IT -	Denomination - GB -	Denomination - FR -	Denomination - DE -
14	62181	CALDAIA 2GR ER ESTRAIB AEA	BOILER 2GR DISTRIBUTION - A.W.R.	CHAUDIERE 2GR DEBIT- R.E.A.	KESSEL 2GR AUSGABE - A.W.F.
14	62186	CALDAIA 2GR ESTRAIBILE OVE	BOILER 2GR DISTRIBUTION OVE	CHAUDIERE 2GR DEBIT OVE	KESSEL 2GR AUSGABE OVE
14	62187	CALDAIA 2GR ER ESTRAIB + 3/8 AEA	BOILER 2GR DISTRIBUTION - A.W.R.	CHAUDIERE 2GR DEBIT- R.E.A.	KESSEL 2GR AUSGABE - A.W.F.
14	62220	CALDAIA 2GR ER ESTR. AEA +3/8 + 1TR	BOILER 2GR DISTRIBUTION+1 BULK UNIT	CHAUDIERE 2GR DEBIT + 1 T.RESERVE	KESSEL 2GR AUSGABE + 1 BRUHGRUPPE
14	62260	CALDAIA 3GR ER ESTRAIB AEA	BOILER 3GR DIST. AUT.WATER REFILL	CHAUDIERE 3GR DEBIT REM.EAU.AUT.	KESSEL 3GR AUSGABE AUT.WASSERFULL.
14	62266	CALDAIA 3GR ESTRAIBILE OVE	BOILER 3GR DISTRIBUTION - OVE	CHAUDIERE 3GR DEBIT - OVE	KESSEL 3GR AUSGABE - OVE
14	62375	CALDAIA 4GR ER ESTRAIB + 3/8 AEA	BOILER 4GR DIST. - AUT.WATER REFILL	CHAUDIERE 4GR DEBIT-REM.EAU AUT.	KESSEL 4GR AUSGABE - AUT.WASSERFULL
15	12154	GUARNIZIONE CU 3/8 22X17X1.5	3/8 22X17X1.5 COPPER SEAL	JOINT CUIVRE 3/8 22X17X1.5	KUPFERDICHTUNG 3/8 22X17X1.5
16	63100	SCAMBIATORE ESTRAIBILE D42 CURVO	EXTRACTABLE EXCHANGER D42 - BENT	ECHANGEUR EXTRAIBLE D42 - COURBE	AUSZIEHBARER WARMETAUSCHER D42
17	43052	RACCORDO "L" 3/8	CONNECTOR 'L' 3/8	RACCORD 'L' 3/8	ANSCHLUSS 'L' 3/8
18	25687	RACCORDO 3/8X3/8 GAS	3/8X3/8 GAS FITTING	RACCORD 3/8X3/8 GAZ	ANSCHLUSS 3/8X3/8 GAS
19	56150	VALVOLA ANTIRISUCCHIO V.A.R.	ANTI-EDDY VALVE V.A.R.	SOUPAPE ANTI-DEPRESSION V.A.R.	VENTIL UNTERDRUCKFREI V.A.R.
20	15422010	RACCORDO "Y" POLIPROPILENE D-10	"Y" POLIPROPILENE FITTING	RACCORD "Y" POLIPROPILENE	ANSCHLUSS "Y" POLIPROPILENE
21	25780	TAPPO MASCHIO OTTONE 1/4	BRASS MALE CAP 1/4	BOUCHON MALE LAITON 1/4	MESSING-STOPFEN 1/4
22	52000119	TBS.D-10 L.125 PESCANTE "L" A 50/A	D-10 125 L PIPE CUPWARMER AT 50/A	TUYAU D-10 L.125 POUR ASPIRATION "L"	ROHR D.10 L.125 A 50/A
23	52000118	TBS.D-10 L.130 AL - ER A 50 PESCANTE	TUBE D-10 L.100 AL A50	TUYAU D-10 L.100 AL A50	ROHR D-10 L.100 AL A50
24	20251	SONDA LIVELLO TL 10/B L125 908600	TL 10/B L125 900000 LEVEL PROBE	JAUGE TL 10/B L125 900000	PEGELFÜHLER TL 10/B L125 900000
25	43033	RACCORDO "T" 3/8X3/8X1/4	3/8X3/8X1/4 T FITTING	RACCORD "T" 3/8X3/8X1/4	ANSCHLUSS 3/8X3/8X1/4 T
26	25785	TAPPO MASCHIO 3/8	MALE CAP 3/8	BOUCHON MALE 3/8	STOPFEN 3/8
27	15006001	FLANGIA GRIGOLY VALVOLA SIC.	FLANGE GRIVORY VALVE	JOINT GRIVORY VANNE	FLANSCH GRIVORY VENTIL
28	20352	VALVOLA DI SICUREZZA *CE*	*CE* SAFETY VALVE	SOUPAPE DE SECURITE *CE*	SICHERHEITSVENTIL *CE*
29	15478002	TUBO SILICONE 8X11 L.70CM	SILICONE TUBE 8X11 L.70CM	TUYAU SILICONE 8X11 L.70CM	SILIKONROHR 8X11 L.70CM
30	12300000	GUARNIZIONE OR 3156 VITON X PISTONI	O RING VITON	JOINT OR VITON	OR DICHTUNG VITON
31	56009980	ASSIEME PROTEZIONE VALVOLE SICUREZZA	UNIT PROTECTION VALVE	ENSEMBLE PROTECTION VANNE	SATZ-SCHUTZGITTER VENTIL